



SIMINI PROTECT LAVAGE

Net Wt. 20ml (0.68 Fl. Oz)

Sterile

For Veterinary Use Only

Description: Simini Protect Lavage is an aqueous solution for irrigation and debridement of wounds. The solution is a sterile, clear, colorless, low-odor aqueous solution that is used to remove debris, including microorganisms, from wounds.

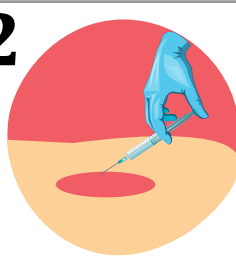
Directions of Use:

1



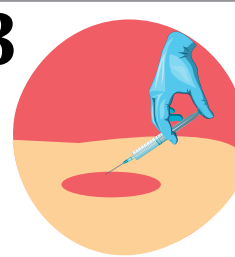
Draw Simini Protect Lavage into a sterile syringe.

2



Dispense desired volume to lavage the wound. (Minimum 10ml)

3



RINSE wound with a greater volume of SALINE or WATER.

4

Use universal precautions in accordance with hospital protocol for the handling and disposal of contaminated waste.

5

Discard any unused solution. For information on disposal of unused, unwanted product, contact the manufacturer or the appropriate municipal/provincial/-territorial agency or product stewardship organization.

Indications: A single-use product is indicated for use in cleansing and removal of debris, including micro-organisms, from wounds. Not intended for repeated use. Not indicated for use during dressing changes or by soaking product into dressings.

Species: For use with dogs, cats and horses.

Ingredients: Ethanol, Acetic Acid, Sodium Acetate, Benzalkonium Chloride(0.13%), and Water.

Contraindications: Simini Protect Lavage solution should not be used if there is a history of allergy to any of the ingredients. Do not use in eyes, ears or in the abdomen or thorax. Do not use in breeding, pregnant or lactating animals.

Warnings: For veterinary use only. Read product label in its entirety before using and follow directions for use. Avoid eye contact. Avoid contact with mucosal membranes. Do not ingest. Do not aspirate. Do not dilute. The safety of leaving the product on the skin for greater than 1 minute is unknown. Product is intended for single use only. Do not use unless solution is clear and container is undamaged.

Storage: Store at 15-25°C. Do not freeze.

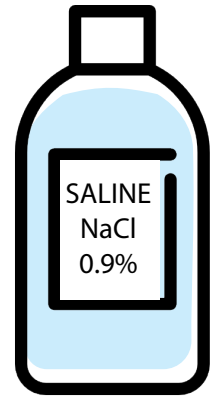
Manufactured in Canada for:

Simini Technologies Inc.
103 Sato Street, Whitby, Ontario, CANADA
www.simini.com (647)292-4920



SIMINI PROTECT LAVAGE

compared to Saline



4 Practical and Important Differences:

- 1 Simini Protect Lavage has a fragrance.**
This scent (like vinegar) lets you know the product is present.
- 2 Simini Protect Lavage needs to be rinsed.**
Simini Protect Lavage should be rinsed with a greater volume of saline.
- 3 Simini Protect Lavage is hypertonic.**
When red blood cells are exposed to hypertonic solutions, water can move out of the cell by osmosis making the cells and thus blood appear darker. This is generally a transient condition, as the red blood cells will take water back when exposed to solutions of normal osmolarity.
- 4 Where Simini Protect Lavage Can't Be Used**
Do not use Simini Protect Lavage in the eyes, ears, abdomen or thorax.