



SURGICAL
POWER
EQUIPMENT



SELECTION | VALUE | EDUCATION | UNPARALLELED SERVICE



TABLE OF CONTENTS

Battery	DeSoutter V-drive	4
	Acculan 4	6
	Stryker CD3	12
	VOIVLS 7400	14
Electric	DeSoutter TPLO	16
	Aesculap Elan 4	17
Air	VetPower Pneumatic TPLO Saw	19
	Pneumatic Accessories	20
Accessories	TPLO / CBLO Blades	21
	Drill Bits	22
	Sterilization Cases	24
	Reference Charts	25

DeSoutter VDrive System

deSoutter
MEDICAL
Distributed by VOI

Product Features:

- Multi-position TPLO attachment to accommodate TPLO/CBLO
- Handpiece offers 2 different drilling modes for drilling and tapping
- Fully Cannulated
- Lithium Ion battery technology offers longer run time and withstands repeated hand washing and autoclaving
- Multiple and single bay charging stations available
- Aseptic Battery, housing, shield, and charging adapter also available
- Use with (VDrive Tray) and (Tray Case - P)
- Use with set screw (code 670433 x 3, used with wrench key 670423)
- Limited warranty

Item #: 1291884 - Handpiece only

Blades Sold Separately

DC Voltage	Speed	Reaming Speed	Chuck Capacity	Rotation	Autoclavable
14.6V	1350 rpm ⁻¹	330 rpm ⁻¹	0.5 - 7.4mm	R&L, Oscillation	✓

Kit Available. Code: Aseptic Ortholite VDrive kit

Power Supply

Ideal when electric power is preferred or as a backup when battery is depleted.

Item #: 17870 - Power Unit

Item #: 15720 - Corded Module



17870



15720



Blades Not Included

Accessories

	Item #	Description	Speed (rpm)	Cannulation O MM
	18320	Jacobs Chuck (1/4") Keyed	0 - 1350	4.4
	18330	Small A.O. Synthes®/ASIF	0 - 1350	2.1
	18440	Jacobs Reamer (1/4") Keyed	0 - 330	4.4
	18300	Small Sagittal Saw	0 - 20000 cpm	Accepts S-88 Blades
	18270	TPLO Oscillating Saw Universal Triangular Hub	0 - 13500 cpm	Uses Set Screw (3) 
	18690	TPLO Oscillating Saw Synthes®	0 - 13500 cpm	N/A
	18310	Wire Driver 0.7 - 4.0 mm Wire Capacity	0 - 1350	4.0


DeSoutter Mineral Oil Lubricant, 50ml Bottle
Item #: 12570

Battery Options

Please refer to manufacturer's user manual for proper battery care.

Aseptic Battery Charge

Product Features:

- Single bay option available
- Requires minimal user input - simply insert the battery(s) and the BC-700 will charge, recover, and recondition to its optimum state



4 Bay Item #: 16230

Single Bay Small Item #: 18000 - Single Bay Large Item #: 18010

movora.com



Small Aseptic Battery Pack

Item #: 17910 | 10.95V
Model AB-703 capacity (mAh) 2000



Large Aseptic Battery Pack

Item #: 17920 | 14.4V
Model AB-704 capacity (mAh) 2000



Small Aseptic Battery Housing

Item #: 18850
Model AH-703



Large Aseptic Battery Housing

Item #: 18860
Model AH-704



Small Aseptic Battery Shield

Item #: 18100
Model AS-703



Large Aseptic Battery Shield

Item #: 18110
Model AS-704

Acculan 4 Large Bone

Product Features:

- Rounded organic shape of the grip area
- Sleek handle incorporates the battery for less bulk
- Attachments for acetabular reaming, intramedullary reaming, drilling, K-wire and small sagittal saw blades up to 50 mm length
- Color coding of locking sleeve for easy identification of drill and reamer attachments
- **Uses GA676 batteries and GA320 Charger**
- Ergonomic Design
- 1 Year Warranty

Item #: **GA330**

Weight	Max Power	DC Voltage	Speed	Rotation	Autoclavable
1,250 g \pm 10%	250 W	9.6 V	1,000-1,250 rpm	R&L, Oscillating	✓

6

Kit Available: Acculan 4 Large Drill Kit

Full selection of compatible "GC" blades available at: movora.com



Lubricant

- Refer to user manual for proper instructions

Oil: **GA059** | Spray: **GB600**

Comes With:

Funnel: **GA678**

Rinsing Adaptor: **GA672211**

Oil Spray Adaptor: **GB600840**

Cleansing Brush: **TA011944**

Wire Slide: **GA672207**






AESCULAP®
Distributed by VOI



Accessories

See battery & charger on page 11

Item #	GB621R	GB639R	GB623R	GB660R	GB641R
Description	LG Jacobs Chuck	SM Jacobs Chuck	AO-Small	Sagittal Saw	K-wire Attachment
Speed (rpm)	1,000	1,250	1,250	17,000	1,250
Max Torque (Nm)	5	4	4		
Cannulation (mm)	0.5 to 7.4	0.5 to 4.0	2.8	Same as Acculan 3 Ti	0.6 to 4.0



Acculan 4 Mini

Product Features:

- Can be used for small fragment Osteosynthesis as well as for reamed intramedullary nailing
- Wide range of attachments enable flexible usage of the small drill with common reaming and drilling tools
- For use with Acculan 4 Li-Ion battery (CODE: GA346) or NiMH (CODE: GA666)
- Attachments are compatible with the ELAN 4 system
- 20% lighter & smaller profile than predecessor 3Ti
- Ergonomic Design
- 1 Year Warranty

Item #: **GA344**

Weight	Max Power	DC Voltage	Speed	Rotation	Autoclavable
840 g \pm 10%	85 W	9.6 V	1250 rpm ⁻¹	R&L, Oscilation	✓

8

Kit Available: Acculan 4 Mini Drill Kit

Full selection of compatible "GP" blades available at: movora.com



Lubricant

- Refer to user manual for proper instructions

Oil: **GA059** | Spray: **GB600**

Comes With:

Funnel: **GA678**

Rinsing Adaptor: **GA344211**

Oil Spray Adaptor: **GB600880**

Cleansing Brush: **TA011944**

Wire Slide: **GA344244**

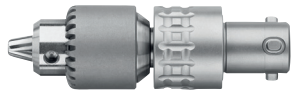


AESCULAP®
Distributed by VOI

Accessories

See battery & charger on page 11

Item #	GB881R	GB871R	GB884R	GB891R	GB894R
Description	LG Jacobs Attachment	AO Reamer	Small Drill QCK	Sagittal Saw	K-wire Attachment
Speed (rpm)	1,250	320	1,250	15,750	1,250
Max Torque (Nm)	1.5	5	1.5		
Cannulation (mm)	0.5 - 7.4 mm	3.2	2.8	Compatible with "GP" blades <i>Full range of blades at movora.com</i>	0.6 to 3.2



GB882R
Small Jacobs Attachment



Acculan 4 TPLO



Product Features:

- Balanced - designed for a 90° precision cut
- Titanium shaft
- Variable speed
- For TPLO & CBLO procedures - universal hub design
- Uses both NiMH (GA666) or Li Ion (GA346) batteries
- Ergonomic Design
- 1 Year Warranty

Item #: **GT666**

Weight	Max Power	DC Voltage	Oscillation Freq.	Oscillation Angle	Autoclavable
1.48 kg	220 W	9.6 V	15,000 1/min	6.5°	✓

Kit Available: GT666 TPLO Saw Kit
Kit Includes:

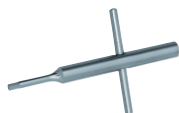
Set Screw

Item #:
TA004103



Hex Key

Item #:
GB020R



Funnel

Item #:
GA678



Full selection of compatible "GC" blades
available at: movora.com

Accessories



Li-Ion Battery

Features Include:

- Same design as NiMH batteries
- Compatible with Acculan 3Ti Surgical Drill and Acculan 3Ti TPLO/CBLO Saw
- More power and reliability with reduced memory effects seen in NiMH batteries
- 9.9V
- Energy content 10.89 Wh
- 120mm x 43mm x 50mm

Item #: **GA346**

Not compatible with GA677 or single bay charger



Battery Cap
Item #: **GA675**



Sterile Funnel
Item #: **GA678**

Dual Battery Charger

Features Include:

- Compatible with both NiMH GA666 and Li-Ion GA346 batteries
- Smaller footprint than original charger
- Mains voltage range: 100V~to 120V~ | 220V~ to 240V~
- Current consumption: 0.8 A (100V ~ to 120V~) | 0.5 A (220V~ to 240V~)
- Charge current max: 1.2A
- Weight 2.3 kg
- Comes with power cord (Item #: **TE735**)

Item #: **GA320**



Blades



View the complete line of Aesculap® TPLO Blades at movora.com

Blade Size	Item #
TPLO Blade 12mm	GC538R
TPLO Blade 15mm	GC539R
TPLO Blade 18mm	GC544R
TPLO Blade 20mm	GC545R
TPLO Blade 24mm	GC546R
TPLO Blade 27mm	GC547R
TPLO Blade 30mm	GC548R

Stryker® CD3 4300

Product Features:

- Lightweight with slim profile
- Cordless
- Sterilization case available - CODE: SC P
- Limited warranty
- Interchangeable accessories with the S-4200

Item #: S-4300

Refurbished with limited warranty

Weight	Max Power	DC Voltage	Speed	Rotation	Autoclavable
907 g ± 10%	85 W	9.6 V	1250 rpm ⁻¹	R&L	✓



12

Battery Options

Please refer to manufacturer's user manual for proper battery care

Kit Available: S 4300 Aseptic Stryker CD3 Kit



Aseptic Battery
Item #: S-4222-110-V



Battery Shield
Item #: S-4222-130-V



Battery Housing
Item #: S-4126-120-V



Single Bay Battery Charger
Item #: S-4300-CH1

Accessories

stryker[®]
Refurbished

Item #	S-4100-131	S-4100-400	S-4100-110	S-4100-125	S-4100-62
Description	Jacobs Chuck	Sagittal Saw	AO QCK Coupling	Pin Collette	Wire Collette
Speed (rpm)	1,250	15,750	15,750	1,250	1,250
Max torque (Nm)	5		5	1.5	1.5
Cannulation (mm)	3.2	! Accepts SM Blades	3.2	0.78 to .125	0.28 to 0.78



Stryker[®] 4200



Product Features:

- Exceptional maneuverability
- Cordless
- Sterilization case available - CODE: SC P
- Limited warranty

Item #: S-4200

Refurbished with limited warranty



Stryker Aseptic 4200 Battery Item #: A-STR-4000

- DO NOT AUTOCLAVE
 - Use with disposable shroud
- Single: Item #: 30010
5 Pack: Item #: 30010-5
Non - Aseptic: STR-4000



2-Bay Charging System Item #: V-2110-120

Adapters: S-4110-112-V

Kit available & includes:

Drill, Jacobs Chuck, AO Quick Coupling, Sagittal Saw & Blades, K-Wire Collet, Pin Collet, Battery Charger, Adapters

VOI VLS 7400

Product Features:

- Linear TPLO saw
- Progressive trigger
- Trigger lock
- Universal triangular blade hub
- Aseptic battery system
- 1 Year Warranty
- Ergonomic Design

Item #: **VLS7400K**

Weight	Max Power	DC Voltage	Speed	Rotation	Autoclavable
900 g \pm 10%	90 W	9.6 V	16,000 rpm \pm 10%	Oscillation	✓



⚠ Case for storage / DO NOT AUTOCLAVE BATTERY

Kit Includes:



Battery Pack
NiMH DC 9.6 V

Item #:
VLS 7400-01
DO NOT AUTOCLAVE



Set Screw
For TPLO Saw Blade

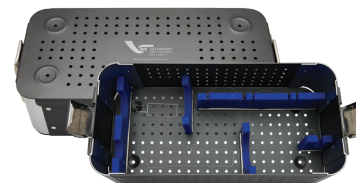
Item #:
VLS 7400-03



Cap
Item #:
VLS 7400-04



2.5mm Hex Wrench
Stainless Steel
Item #:
VLS 7400-05



Anodized Case
For TPLO Saw Kit
Item #:
VLS 7400-06



Charger
For Linear TPLO Saw
Item #:
VLS 7400-02



A hand wearing a white surgical glove holds a surgical handpiece. The handpiece has a black handle with the brand name 'AESCULAP' printed on it. A long, thin, metallic shaft extends from the handle, ending in a small, rounded tip. The background is a light gray with some faint geometric shapes in the bottom right corner.

ELECTRIC ⚡ POWER

DeSoutter TPLO Oscillating Saw

Product Features:

- Non-Autoclavable - ETO Sterilization only
- Single Speed
Variable speed foot pedal - sold separately
- Variety of TPLO Blades sold separately

Item #: **1282774**



Weight	Voltage	Speed	Rotation	Autoclavable
1.3 kg	100 - 120V	14,000 cpm	Oscillation	X

Included:

Set Screws (In Triangular Hub)

qty (3) - 10 mm For Top

Item #: **OR-WE-SLSSETSCRW-10**



QTY (4) - 5 mm For Bottom (In Triangular Hub)

Item #: **OR-WE-SLSSETSCRW-5**



Hex Wrench

Item #: **53855A42**



Universal Triangular Hub

Item #: **316TH**



Disposable Shroud Available

Item #: **300011**



deSoutter
MEDICAL
Distributed by VOI

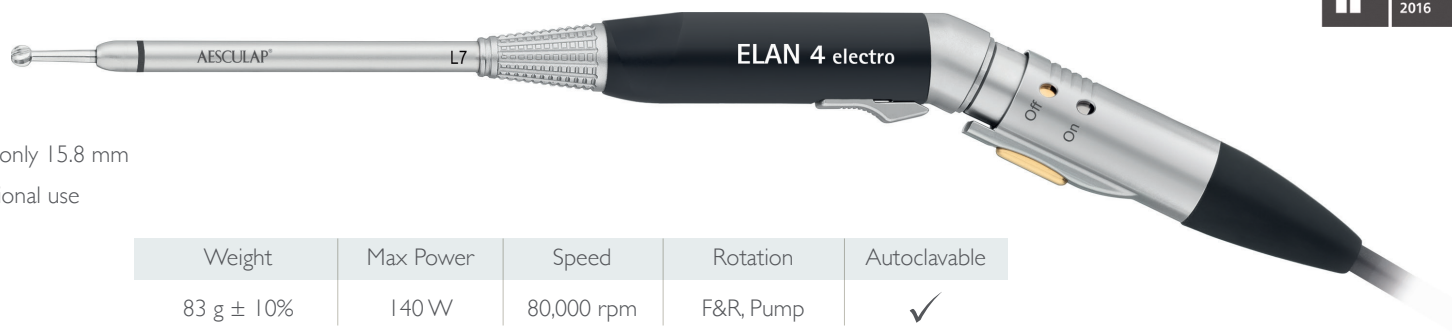
Elan 4 Electro

AESCULAP®
Distributed by VOI



Product Features:

- Quick release attachments
- Handpiece has a round diameter of only 15.8 mm
- Safety mechanism prevents unintentional use
- Ergonomic design



Item #: **GA862**

Steri Case available from Aesculap

Weight	Max Power	Speed	Rotation	Autoclavable
83 g ± 10%	140 W	80,000 rpm	F&R, Pump	✓

Power



Elan 4 Electro Control Unit

Product Features:

- Motor and foot-control connections on the front of the control unit
- Connections coded by color, shape, size and symbol

Item #: **GA800**



Elan 4 Electro Foot Control

Product Features:

- Proven ergonomics of the pedal
- Rocker switch for pump and forward / reverse selection
- Flush irrigation function
- Pedal can be disassembled for better and easier cleaning

Item #: **GA808**



Elan 4 Electro Motor Cable

Product Features:

- 4 Meters long
- High quality plugs
- Connections coded by color, shape, size and symbol

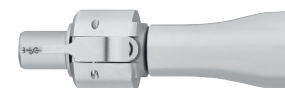
Item #: **GA806**

Accessories & Cleaning



Elan 4 Electro Micro Reciprocating Saw

Item #: **GA837**



Elan 4 Electro Rinsing Adapter

Item #: **GB698R**



Elan 4 Electro Micro Sagittal Saw

Item #: **GA836**



Elan 4 Electro Oil Spray Adapter

Item #: **GB600860**



Elan 4 Electro Rinsing Device

Item #: **GB692R**

Elan 4 Spray Nozzle F/I-RG. Handpiece L7 (Not Shown)

Item #: **GA262SU**



PNEUMATIC POWER

VetPower Pneumatic TPLO Saw

Product Features:

- Universal triangular bladehub fits most crescentic TPLO/CBLO blades
- Single hand operation
- Variable speed control offers maximum precision and accuracy
- TPLO/CBLO Blades sold separately
- 1 Year Warranty

Item #: **T2100**



Weight	Operating Pressure	Speed	Rotation	Autoclavable
1.20 lbs. ± 10%	90 psi to 110psi	16,000 cpm (nominal)	Oscillating	✓

Sold Separately:

Set Screws

QTY (Q) - 1/8" Hex Recess

Item #: **1100 SET SCREW-LOCKING**



Sold Separately:

VOIT Hex Key-Wrench

1/8" Stainless Steel

Item #: **11990**



Sold Separately:

VetPower Air Hose

Product Features:

- Male Schrader Connection
- 10 ft. Pneumatic Hose Gen 2
- May require to hose-to-regulator adaptor outside the USA

Item #: **T2100-25**



Pneumatic Accessories

Air/Nitrogen Regulator

Product Features:

- 0-180psi, adjustable pressure
- Single stage, Fits "H" tanks
- Comes fitted with female Air Quick-Connect (SCHRAD-F)
- Accepts 1/4" NPT Schrader Air Quick-Connect



Item #: **MSH180580**

Hall Style Hose

Item #: **5052-10**



3M Mini Driver Hose

Item #: **3M-A201**



Stryker Style Hose

Item #: **S-277-5**



Microaire Hose

Item #: **M-9000-C**



Schrader Air Quick Connect

Product Features:

- Has a male thread (1/4" NPT)
- Installs into regulator
- Accepts air hoses with male Schrader end
- Fits Hall & 3M Hoses (Female)



Item #: **SCHRAD-F**

Jacobs Chuck Keys - 11 Teeth

Product Features:

- Stainless Steel
- Autoclavable
- 11 teeth
- Compatible with all standard power equipment



Item #: **I0057B**

Y Adapter

Product Features:

Sold as a Y adapter or as individual components

- Use two different pneumatic power tools on the same tank

Item #: **ZREG-YO-SC16**



TPLO / CBLO Blades

VOI TPLO/CBLO Blades

Product Features:

- Universal Fit - Triangular hub
- Contoured cutting edge
- Stainless steel
- Also available in Diamond-like Carbon Coating (DLC)

Blade Size	Uncoated	DLC Coated
	Item #	Item #
8 mm VOI TPLO Blade	8 MM TPLO BLADE	8 MM TPLO BLADE-DLC
10 mm VOI TPLO Blade	10 MM TPLO BLADE	10 MM TPLO BLADE-DLC
12 mm VOI TPLO Blade	12 MM TPLO BLADE	12 MM TPLO BLADE-DLC
15 mm VOI TPLO Blade	15 MM TPLO BLADE	15 MM TPLO BLADE-DLC
18 mm VOI TPLO Blade	18 MM TPLO BLADE	18 MM TPLO BLADE-DLC
21 mm VOI TPLO Blade	21 MM TPLO BLADE	21 MM TPLO BLADE-DLC
24 mm VOI TPLO Blade	24 MM TPLO BLADE	24 MM TPLO BLADE-DLC
27 mm VOI TPLO Blade	27 MM TPLO BLADE	27 MM TPLO BLADE-DLC
30 mm VOI TPLO Blade	30 MM TPLO BLADE	30 MM TPLO BLADE-DLC
33 mm VOI TPLO Blade	33 MM TPLO BLADE	33 MM TPLO BLADE-DLC



Looking for other blades and burs? Visit movora.com or contact your representative.

VOI TPLO/CBLO Blades - Synthes® Compatible

Product Features:

- 7.5 mm Blade offers clean and precise cutting
- Straight cutting edge
- Stainless steel

Blade Size	Item #
10mm	CB 10MM
12mm	CB 12MM
15mm	CB 15MM
18mm	CB 18MM
21mm	CB 21MM
24mm	CB 24MM
27mm	CB 27MM
30mm	CB 30MM
33mm	CB 33MM



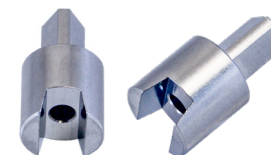
Synthes® compatible blades use a Star Drive T15 Driver for quick attachment

TPLO Blade Adapters

Product Features:

- Adapter allows a Synthes® TPLO blade to be used in any triangle collet TPLO saw.

Item #: STS-A



Product Features:

- Adapter allows a Synthes® TPLO saw to accept any triangle hub TPLO blade.

Item #: STS-B & STS-B-01



Drill Bits



	Cortical Screws							Cancellous Screws				
Screw Diameter (mm)	1.5	2.0	2.4	2.7	3.5	4.5	5.5	2.0	3.0	3.5	4.0	6.5
Drill Bit Diameter (mm) for gliding hole	1.5	2.0	2.4	2.7	3.5	4.5	5.5	2.0	3.0	3.5	4.0	6.5
Drill Bit Diameter (mm) for threaded hole	1.1	1.5	1.8	2.0	2.5	3.2	4.0	1.1	2.0	2.5	2.5	3.2
Tap (mm)	1.5	2.0	2.4	2.7	3.5	4.5	5.5	2.0	3.0	3.5	4.0	6.5
Hex Driver Size (mm)	1.5	1.5	2.0	2.5	2.5	3.5	3.5	1.5	2.5	2.5	2.5	3.5

Jacobs Drill Bits

Product Features:

- Uses chuck key to tighten bit in power equipment
- Stainless steel

Item #	Diameter	Length (mm)
0.8 JAC 55	0.8	55
1.1 JAC 45	1.1	45
1.1 JAC 85	1.1	85
1.5 JAC 70	1.5	70
1.5 JAC 128	1.5	128
1.8 JAC 100	1.8	100
2.0 JAC 85	2.0	85
2.0 JAC 128	2.0	128
2.5 JAC 95 (tin coated)	2.5	95
2.5 JAC 180 (tin coated)	2.5	180
2.7 JAC 85	2.7	85
2.7 JAC 128	2.7	128
2.8 JAC 165	2.8	165
3.2 JAC 130	3.2	130
3.2 JAC 180	3.2	180
3.5 JAC 180	3.5	180
4.0 JAC 127	4.0	127
4.0 JAC 225	4.0	225
4.5 JAC 127	4.5	127
4.5 JAC 180	4.5	180
Jacobs Self-Centering		
1.5 JAC 85 SC	1.5	85
1.8 JAC 100 SC	1.8	100
2.0 JAC 85 SC	2.0	85
2.5 JAC 95 SC (tin coated)	2.5	95
2.7 JAC 100 SC	2.7	100
2.8 JAC 165 SC	2.8	165



Quick Coupling Drill Bits

Product Features:

- Quick coupling for easy bit changes
- Stainless steel

Item #: 1.1 QCK 60

Item #	Diameter	Length (mm)
1.1 QCK 60	1.1	60
1.5 QCK 85	1.5	85
1.5 QCK 110	1.5	110
1.8 QCK 100	1.8	100
2.0 QCK 100	2.0	100
2.0 QCK 125	2.0	125
2.4 QCK 125	2.4	125
2.5 QCK 110 (tin coated)	2.5	110
2.5 QCK 180 (tin coated)	2.5	180
2.7 QCK 100	2.7	100
2.7 QCK 110	2.7	110
2.7 QCK 125	2.7	125
2.8 QCK 165	2.8	165
3.2 QCK 145	3.2	145
3.2 QCK 195	3.2	195
3.5 QCK 110	3.5	110
3.5 QCK 195	3.5	195
4.0 QCK 125	4.0	125
4.0 QCK 145	4.0	145
4.0 QCK 195	4.0	195
4.3 QCK 180	4.3	180
4.5 QCK 145	4.5	145
4.5 QCK 195	4.5	195
5.5 QCK 195	5.5	195
Quick Coupling Self-Centering		
1.5 QCK 85 SC	1.5	85
1.8 QCK 100 SC	1.8	100
2.0 QCK 100 SC	2.0	100
2.5 QCK 110 SC	2.5	110
2.7 QCK 100 SC	2.7	100
2.8 QCK 165 SC	2.8	165



DLC Coated Drill Bits

Diamond-like Carbon

These Quick Coupling (QCK) Improved Performance Includes:

- Superior cutting edge retention
- Low friction – reduces tissue degradation and lowers the level of applied force
- Longer wear – up to 5-10x more uses
- Non-toxic biological compatibility
- Non-stick properties simplify cleaning and sterilization process
- Low reflectivity
- Corrosion and scratch resistant
- Thoroughly tested* in the medical field



Standard End Bits

1.1 QCK 60 DLC | 60mm long
1.5 QCK 85 DLC | 85mm long
1.5 QCK 110 DLC | 110mm long
1.8 QCK 100 DLC | 100mm long
2.0 QCK 100 DLC | 100mm long
2.5 QCK 110 DLC | 110mm long
2.5 QCK 180 DLC | 180mm long
2.8 QCK 165 DLC | 165mm long



Our Self-centering drill bits are used to minimize the movement of the drill bit across the bone.



Normal Bit Tip



Self-Centering Bit Tip

*VOI drill bits are coated with Medthin™ 41 (Cr + CrN + a-C:H) DLC coating, one of the most tested and widely used DLC coatings in the medical field.



Self-Centering Bits

1.5 QCK 85 SCDLC | 85mm long
1.8 QCK 100 SCDLC | 100mm long
2.0 QCK 100 SCDLC | 100mm long
2.5 QCK 110 SCDLC | 110mm long
2.8 QCK 165 SCDLC | 165mm long

Dental Quick Coupling

Product Features:

- Quick coupling for easy bit changes
- Specifically made for dental use

Item #	Diameter	Length (mm)
1.1 D QCK	1.1	52
1.5 D QCK	1.5	52



1.1 D QCK



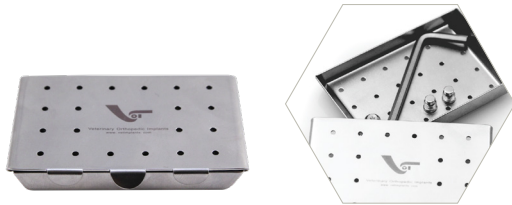
1.5 D QCK

QCK - Adaptor for Power Drills

Item #: GS 86.1002



Sterilization Cases FOR POWER & ACCESSORIES



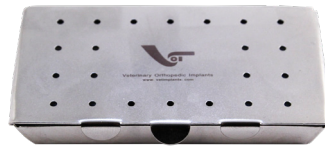
Great for small items!

Micro Sterilization Case

Product Features:

- Length: 69 mm | Width: 43 mm | Height: 9.0 mm
- Sliding Lid
- Stainless Steel

Item #: **SC M**

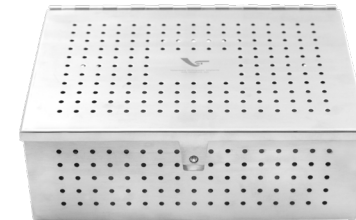


Micro Sterilization Case Large

Product Features:

- Length: 83 mm | Width: 43 mm | Height: 9.3 mm
- Sliding Lid
- Stainless Steel

Item #: **SC MXL**



Sterilization Case

Product Features:

- Length: 260 mm | Width: 180 mm | Height: 90 mm
- Hinged Lid
- Stainless Steel

Item #: **SC P**



Sterilization Case For VDrive Tray

Product Features:

- Length: 370 mm | Width: 194 mm | Depth: 112 mm
- Large anodized sterilization case is perfect for autoclaving power equipment and accessories
- Holds any of the TPLO trays or CBLO trays

Item #: **TRAY CASE - P**

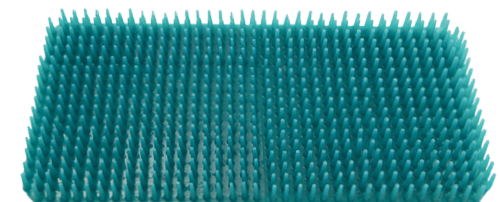


VDrive Tray Case

Product Features:

- Length: 337 mm | Width: 185 mm | Depth: 93 mm
- Autoclavable
- Stainless Steel

Item #: **VDRIVE TRAY**



Sterimat For TRAY CASE

Product Features:

- 184.15mm x 349.25mm
- Silicone
- 15 mm high

Item #: **STERIMAT - TRAY CASE**

! Other sizes available at movora.com

Reference Charts

Wrench / Key / Set Screw Guide

Wrench / Key	Hex Size	Hex Size	Compatible Set Screw	Usage
53855A42	2.5	13/128"	I 8270-5MM, OR-WE-SLSSETSCREW, VLS 7400-03	I 282774, 224774, Jigs, STS-A
GB020R	3.0mm	15/128"	TA004103	Paired with Acculan TPLO saw. Can be used for Acculan saw
MSS I 630 HW	3.6mm	9/64"	None. MSS I 630 has a non-removable set screw	MSS I 630 HW is the only key with a single use
670423	4.0mm	5.32"	670433	deSoutter TPLO attachment

Set Screw	Length	Recess & Size	Compatible Wrench	Compatible Shaft	Usage
OR-WE-SLSSETSCRW-5	5mm	Hex (2.5mm)	53855A42	20022	These are the same: ■ Jigs (small & standard) ■ deSoutter TPLO & Attachment ■ STS-A
I 8270-5MM	5mm	Hex (2.5mm)	53855A42	20022	
OR-WE-SLSSET- SCRW-I0	10mm	Hex (2.5mm)	53855A42	20022	
SS-M5-TI5	5mm	Star (TI5)	None	20037	
VLS 7400-03	5mm	Hex (2.5mm)	53855A42	20022	
TA004103	8mm	Hex (3.0mm)	GB020R	None	Exclusively used for Acculan
670433	15mm	Hex (4.0mm)	670423	None	Exclusively used together for the deSoutter TPLO attachment

Pin Diameter Conversion Chart

- The terminology goes from Wire to Pin once we get to 1.16" because "wire" indicates the smaller sizes and "pin" indicates the larger sizes, however; the terms wire and pin are interchangeable
- The (0.062) is the same diameter as the (1/16")
- There is no equivalent "fractions of an inch" measurement for the wire sizes
- Tan font shows how the part number relates to the diameter in decimals of an inch
- Green font shows how the part number relates to the diameter in fractions of an inch

Terminology	SKU	Diameter Fractional / Inch	Diameter Decimal / Inch	Diameter (mm)
Wire	0.024	-	0.024	0.60
Wire	0.027	-	0.027	0.68
Wire	0.032	-	0.032	0.81
Wire	0.045	-	0.045	1.14
Wire	0.054	-	0.054	1.37
Wire	0.062	1/16	0.062	1.57
Pin	1.16	1/16	0.062	1.57
Pin	5.64	5/64	0.078	1.98
Pin	3.32	3/32	0.093	2.36
Pin	7.64	7/64	0.109	2.76
Pin	1.80	1/8	0.125	3.17
Pin	9.64	9/64	0.140	3.55
Pin	5.32	5/32	0.156	3.96
Pin	3.16	3/16	0.187	4.74
Pin	1.40	1/4	0.250	6.35
Pin	5.16	5/16	0.312	7.92

A local Movora team is ready to assist you with finding the right power solutions for your practice. Visit movora.com/representatives to find your local rep and discuss your needs.